

L O F T TM

Bytello Share User Manual



Table of Contents

Activating Bytello Share	4
Screen Casting using Standard Protocols	5
AirPlay Mirroring	
Android Miracast/Chromecast	
Connect (by Device Discovery)	
Screen Casting using the Bytello Share App	8
Connect (With a Code)	
Mirroring Your Screen	9
Using the Floating Window	
Rearranging the Screen	
Photo/Video Sharing	
Desktop Sync	
Remote Control	
Screen Copy	
Remote Camera	
Device Management	
Invite to Share	
File Sharing	
Disconnecting Devices	
Administrator Authorization	
Settings	16
About	17
User Guide	17

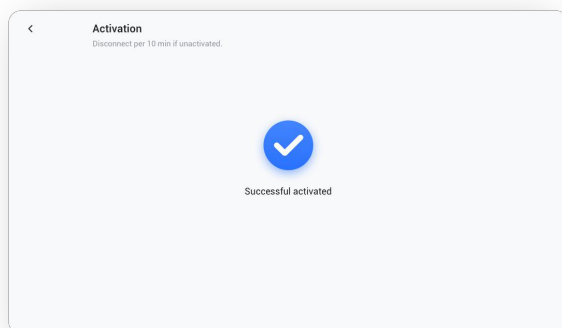
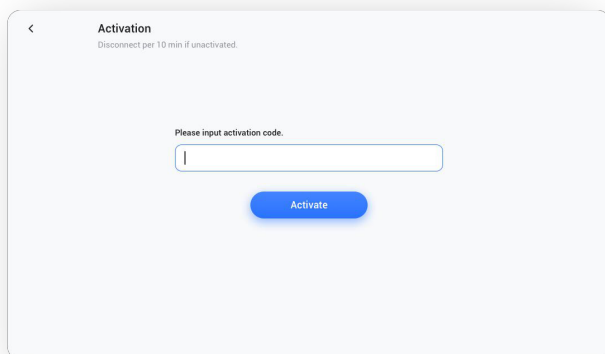
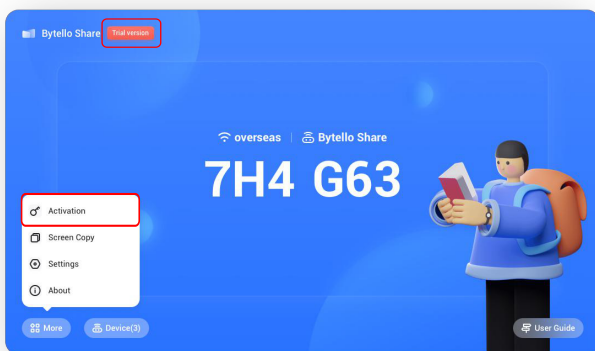
Bytello Share

Features

- Screen Casting
 - Up to 9 devices can cast at the same time
 - Screens can be rearranged or shown in a floating window on the display
 - Supports AirPlay for Apple devices
 - Supports Miracast for Android/Windows devices (Windows 8.1+ required)
 - Supports Chromecast for Chrome OS/Chrome Browser/Android
 - Client App support Windows/macOS/Android/iOS/Chrome OS
 - Client App support both primary and extended screen casting (Windows/macOS)
 - Client App supports application or full screen casting (Windows/macOS)
- Photo/Video Sharing
 - Cast photos/videos from album (iOS/Android)
 - Scroll through, play, and pause pictures/video/audio/slides from both your mobile device and the display
- Desktop Sync
 - Sync desktop of IFP to 30+ devices
 - Wirelessly control your PC with the touchscreen
- Screen Copy
 - Copy one IFP screen to others
 - One to multi-screen casting
- Remote Control
 - Touchpad control
 - Air-Mouse (Gravity Accelerometer) control available
- Remote Camera
 - Show camera of mobile device on the display
- Device Management
 - Mobile Management – Authorize a mobile device as administrator to remotely control casting
 - Moderator Mode – Require permission for any incoming request
 - Invite to Share – Invite screencast from administrator device
 - Touch Control – Authorize any device in desktop sync mode to control the panel
 - File Sharing – Share file among connected devices
 - Disconnect All Devices

Activating Bytello Share

1. Open the software, and find and select the menu. You should see the “Activation” option. If the “Activation” option does not appear, your display has already been activated.
2. Click the “Activation” icon, enter an activation code and select “Activate”. The software will be activated.

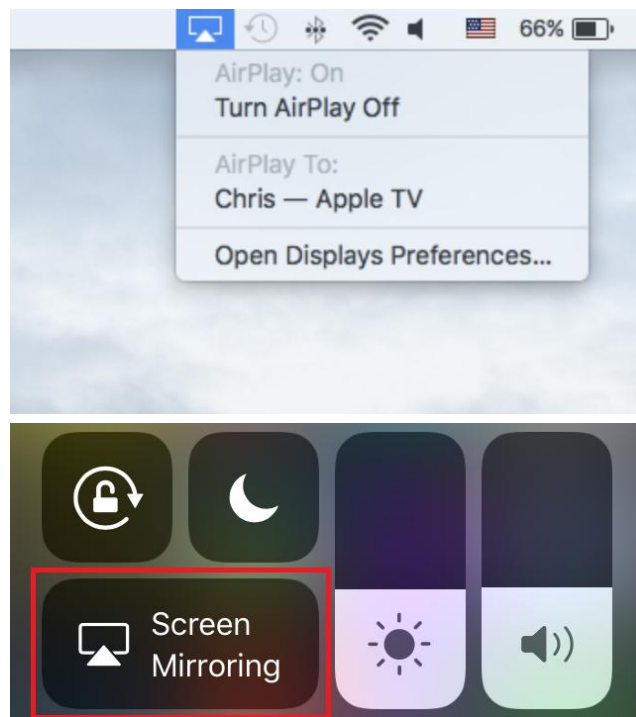
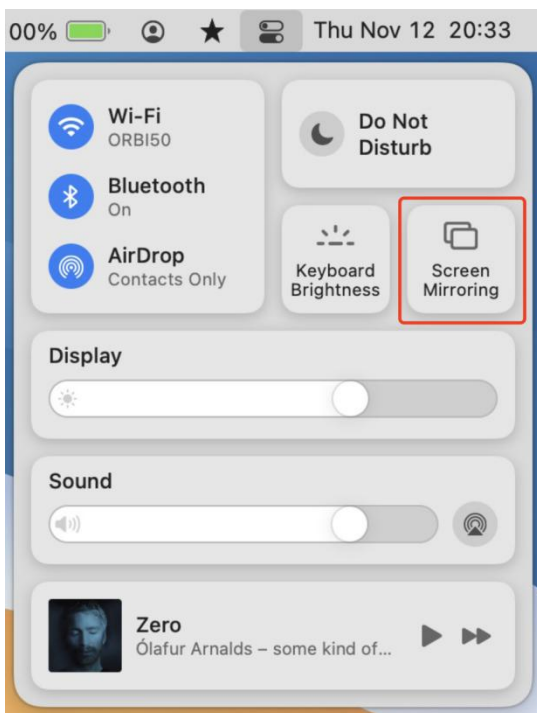


Screen Casting using Standard Protocols

AirPlay Mirroring

When an Apple device is connected to the same network as the Bytello Share device, you can simply cast the screen by choosing “Screen Mirroring” from Control Center (this may vary due to different OS versions).

Note: On some networks, AirPlay support may be disabled by default for security reasons.



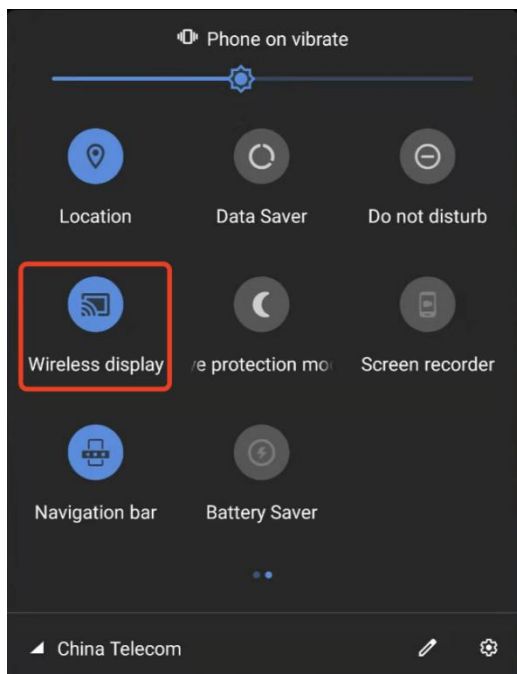
Android Miracast/Chromecast

For Miracast, please make sure the client device is nearby the host device;
For Chromecast, please make sure the client and host are in the same network.

Android Device:

Find “Wireless Display” in your device’s Quick Settings menu or Settings app, then choose the target display.

Note: On some networks, Miracast/Chromecast support may be disabled by default for security reasons.

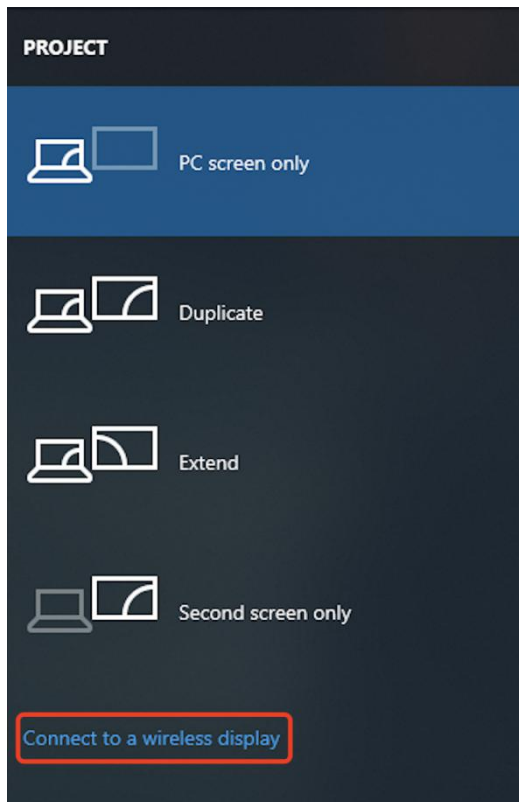


Windows Device:

Press Win+P, click “Connect to a wireless display”, choose the target device.

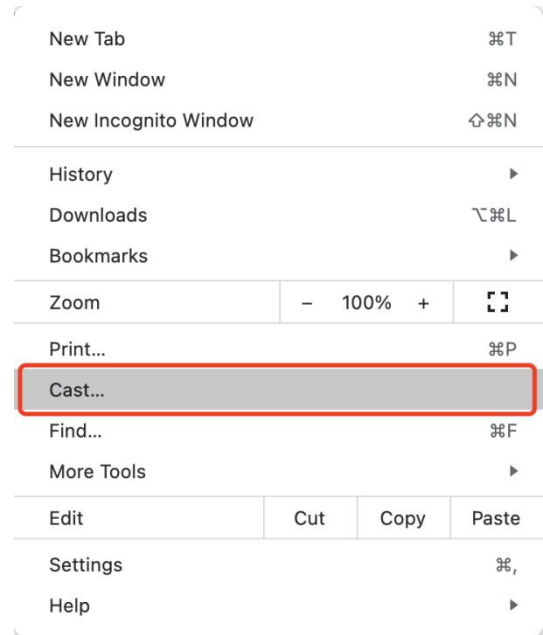
Not all windows devices support Miracast, please check the link below to see if your device is supported:

<https://www.tenforums.com/tutorials/59107-check-miracast-support-windows-10-pc.html>



Chrome OS/Browser:

Choose “Cast...” from the menu.



Screen Casting using the Bytello Share App

Connect (With a Code)

A connection code is displayed on the server.

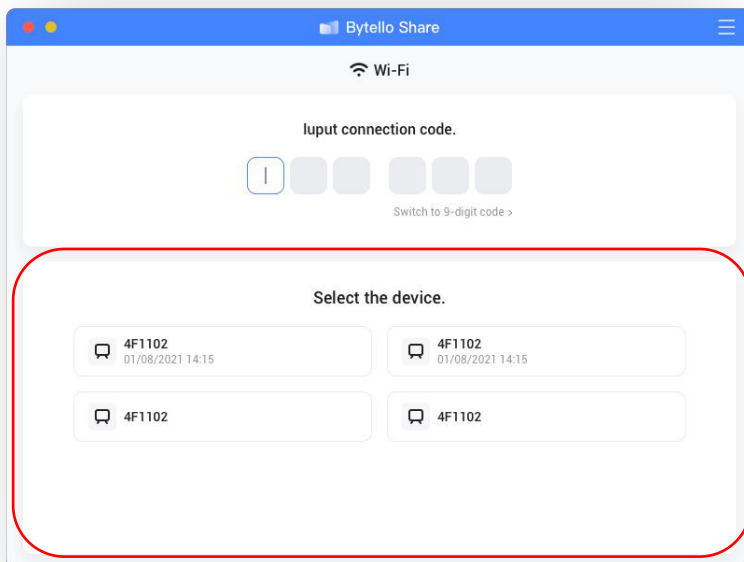


Input the connection code on client to connect to the server.

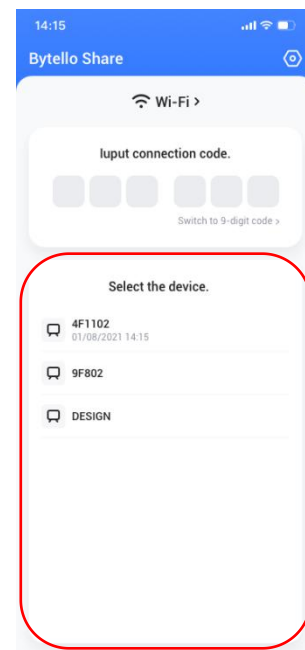
Note: If the connection code on the server is 9-digits, please switch to 9-digits input mode on the sender.

Connect (by Device Discovery)

Available displays can be found in the connection page. Simply connect by choosing the right server.



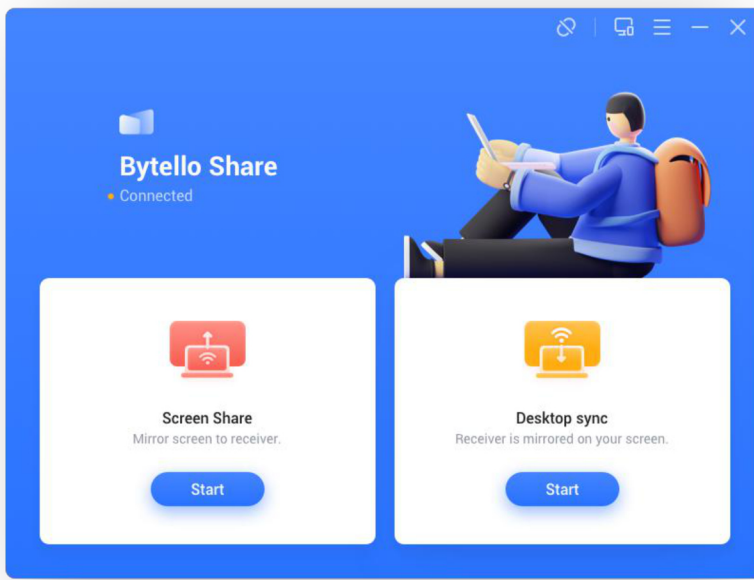
macOS



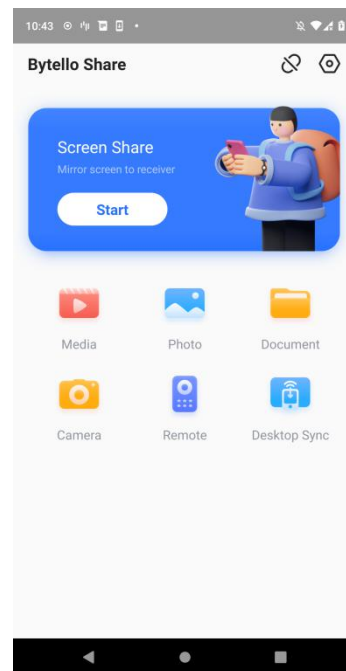
iOS

Mirroring Your Screen

Click “Start” will begin casting the client screen to the server.

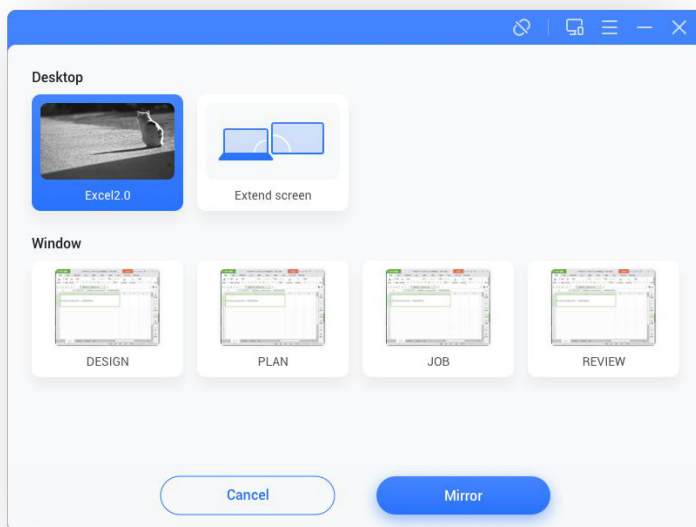


Windows




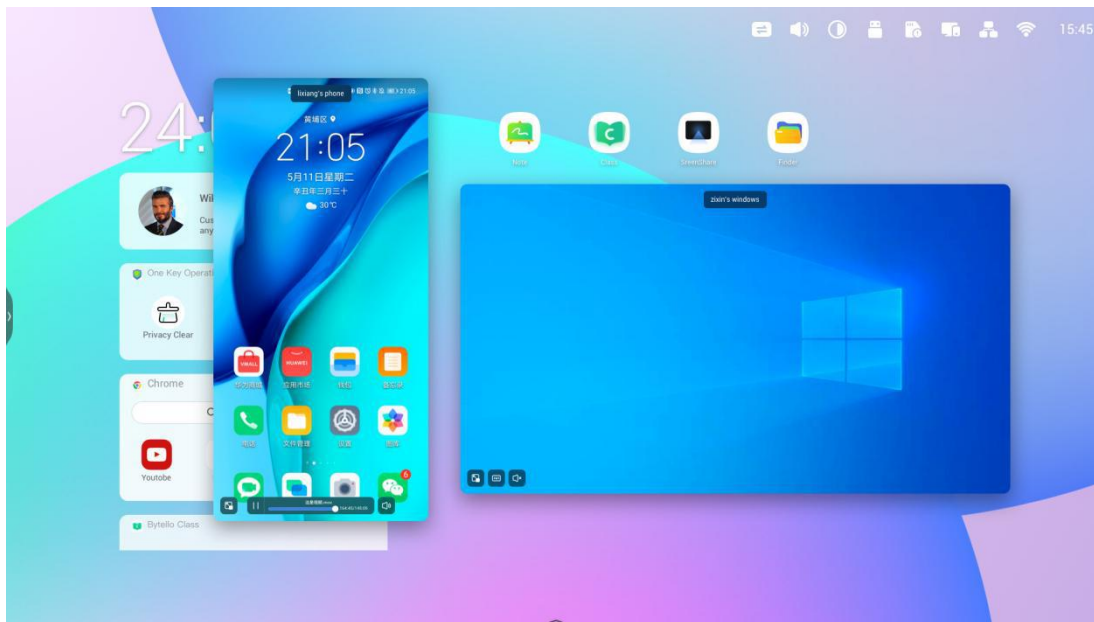
Android

For Windows/macOS, you can share one application or window instead of the entire desktop, or you can choose to share your primary or extended screen.



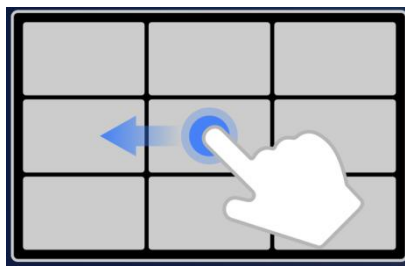
Using the Floating Window

Click this button  on the touch panel to turn the casting screen into a floating window.



Rearranging the Screen

Long press the on the host display and drag the window to rearrange the sharing windows.



Notes:

1. Touch control is only available when casting the entire desktop and needs to be authorized from the server-side in the device management page.
2. When casting multiple devices at the same time, touch control is only available on the maximized screen.
3. Touch Control can not be used on mobile systems (Android, iOS) due to system limitations.
4. For the IFP system that supports free-form mode, sharing content can be shown as a window by sliding down from the top of the screen.

Photo/Video Sharing

For mobile devices, users can share photos or videos directly from their device, including operations like zooming in/out. Playback can be controlled from the mobile devices or the display.

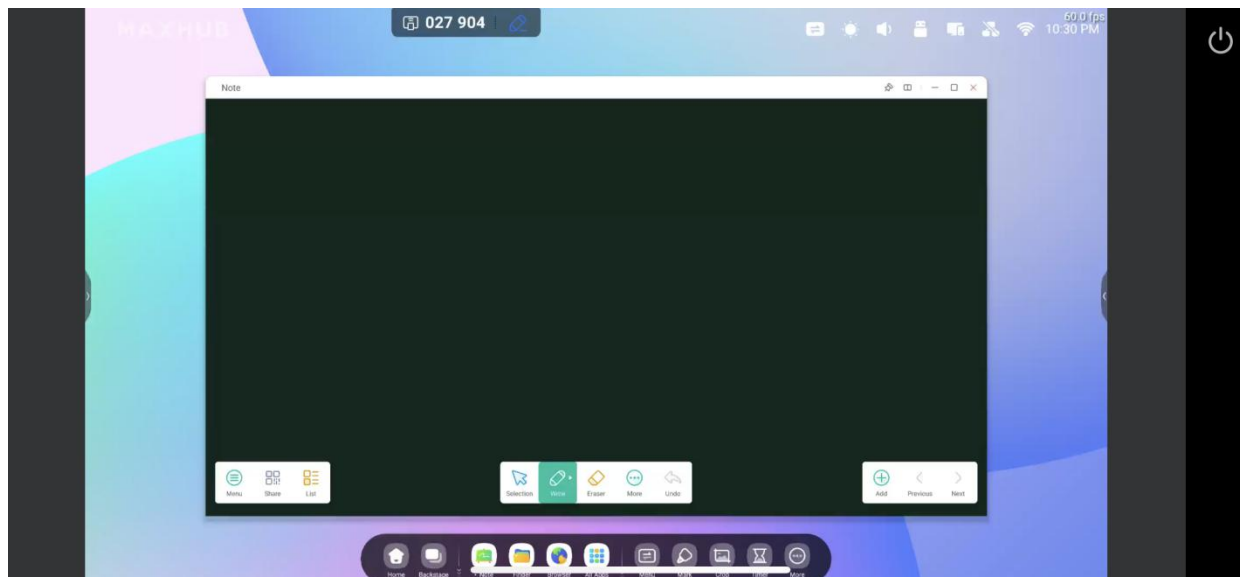


Desktop Sync

Your mobile device's screen can be shown on the desktop of the host device.

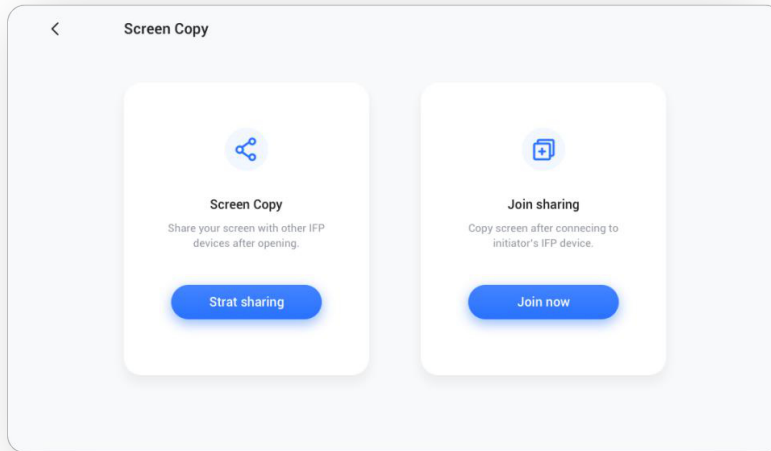
Annotate the shared content by selecting the annotation mode from the icon besides the connection code.

Touch Control may be disabled by default for safety consideration, but can be enabled from the device



Screen Copy

Make a group of displays, mirror one screen to others to make them show the same content. The content can be copied from a sender device, or from the display itself.



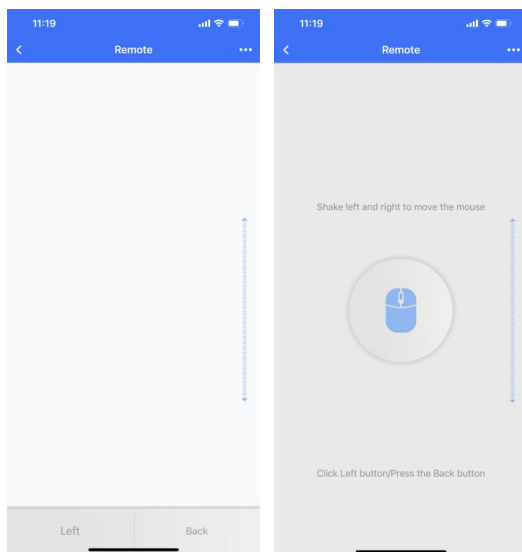
Choose "Screen Copy" - "Start Sharing" from the source device.

Choose "Screen Copy" - "Join now" from the target device.

All target devices will show the display from the source.

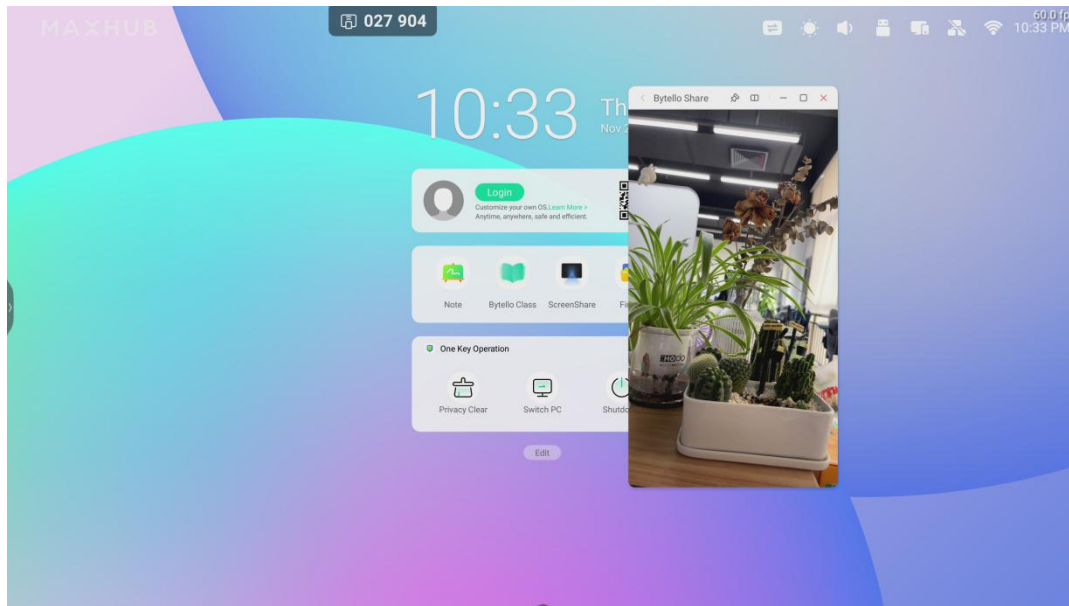
Remote Control

Android phone or iPhone can be used as a touchpad or air-mouse to control the display.



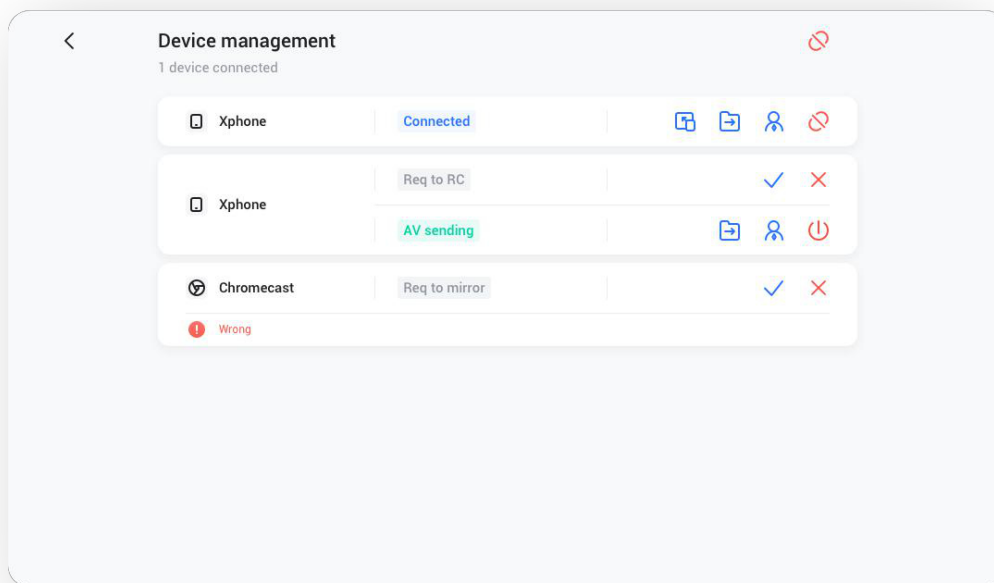
Remote Camera

Android phones or iPhones can share their camera view directly to the display.



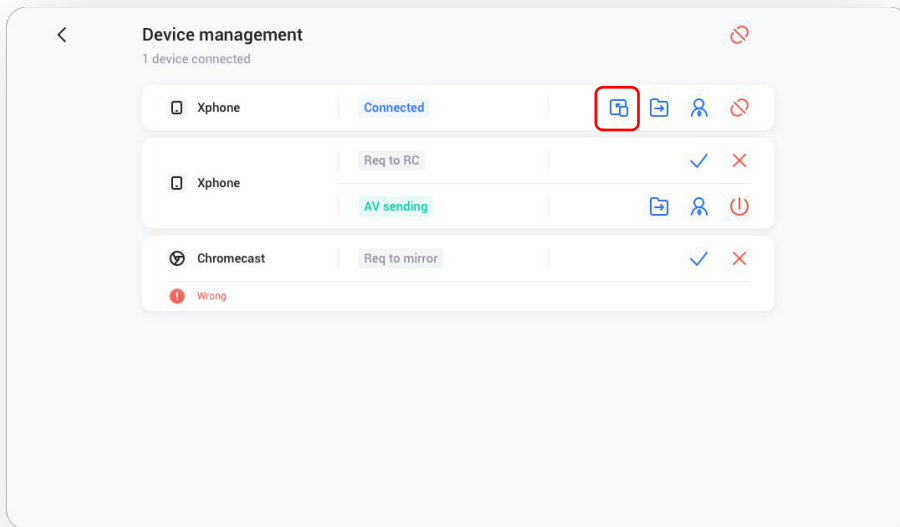
Device Management

The device management page shows all connected device status, and has several quick controls.



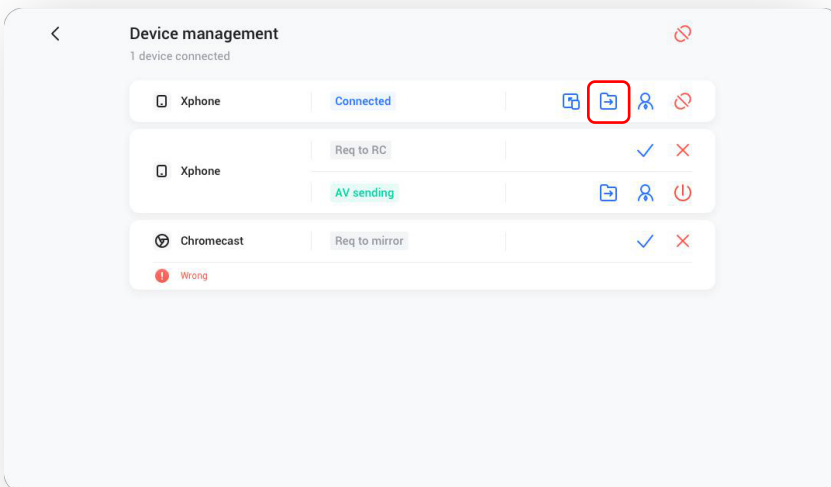
Invite to Share

Connected devices can be invited to share their screen from the host display.



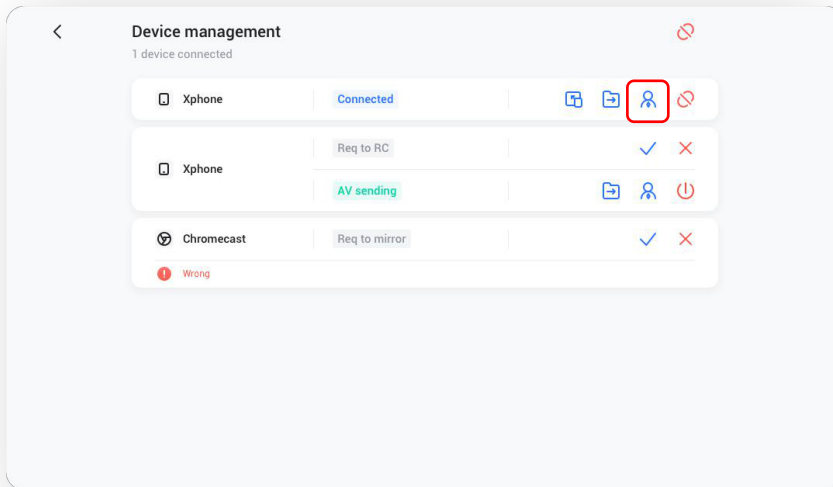
File Sharing

Files from the host can be sent to any connected device.



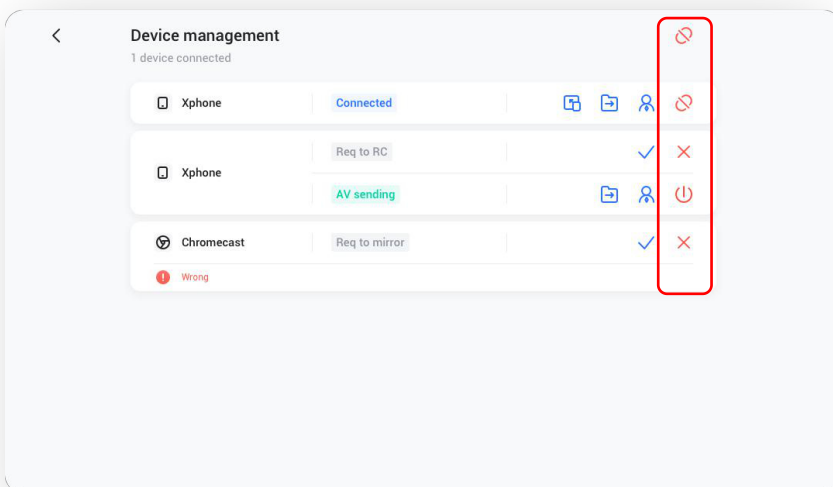
Administrator Authorization

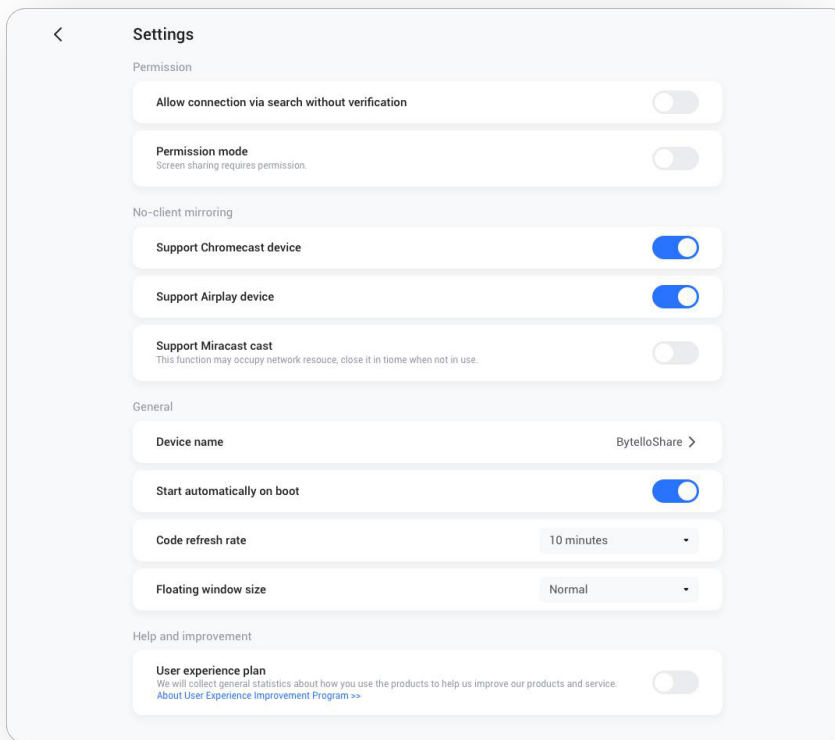
Set one device as administrator to accept or reject screen sharing requests.



Disconnecting Devices

Stop sharing or disconnect devices using the admin panel.





Device name

Change the device name of the host display, for any clients to identify.

Allow this device to be discovered

The display can be searched by the sender device.

Permission mode

When “Screenshare requires permission” option is enabled, any casting request will ask for permission from the host display.

Support Chromecast/AirPlay device

Make the display discoverable for Chromecast/AirPlay supported device.

Support Miracast device

Make the display discoverable for Miracast supported device.

Start automatically on boot

The server application will run when the system starts.

Code refresh rate

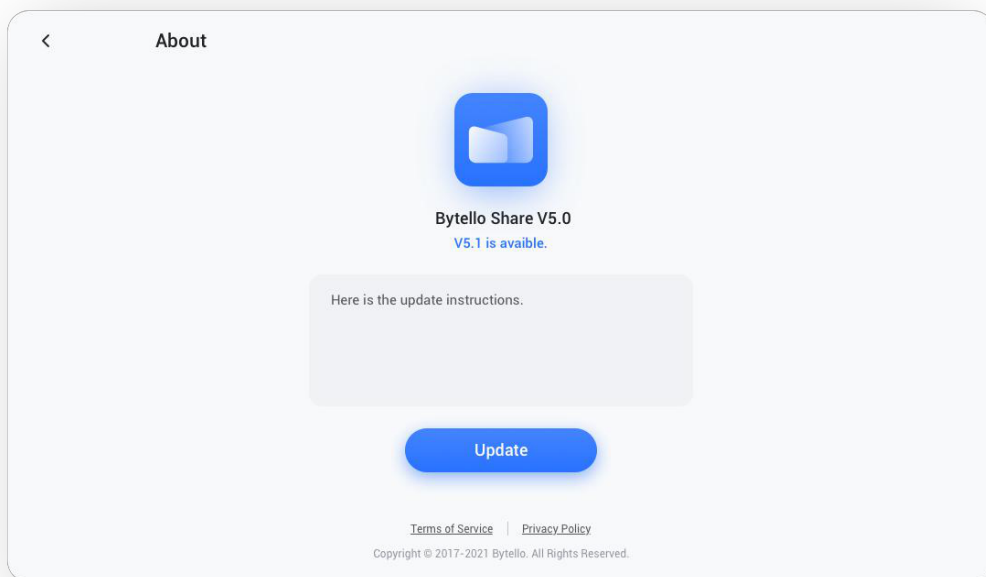
The connection code will change every several minutes to prevent users from remembering.

Floating windows size

Normal (connection code with icon), small (only icon), minimize (disabled)

About

Update the software version or view the legal agreement. When there is a new version available, please click “Update” to upgrade.




User Guide

Including how to use the app client for connection and how to cast screen via AirPlay, Chromecast, or Miracast.

< User Guide

How to connect?


1 Sender 5.0+ is required for this connection code. Alternatively, you can connect to this device through service discovery.




Install Bytello Share

By visiting the website:
ssp.bytello.com/download

Or by scanning code:






Same Network

Make sure all devices are connected to the same network.

Current network of this device:
[overseas](#)



Connect

By inputing connection code:
7 H 4 G 6 3

Or by searching this device:
4F1102

How to share screen without client?



Airplay | Chromecast | Miracast

How to share screen without client?

Airplay | Chromecast | Miracast

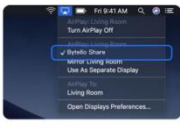
iPhone

- Please down the system menu from the top of the phone and click the [Screen Mirroring].
- Making sure to connect to the same Wi-Fi, then select [Bytello Share] to start mirroring.

Mac

- Making sure to connect to the same Wi-Fi,
- Select Airplay in the status bar at the top of the system
- Select the receiver device to mirror.

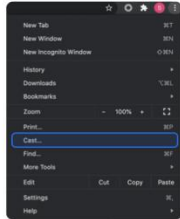


How to share screen without client?

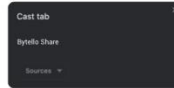
Airplay | **Chromecast** | Miracast

Chrome Browser

① Select [cast] in the chrome browser menu.



② Making sure to connect to the same Wi-Fi, then select [Bytello Share] in the cast tab.



How to share screen without client?

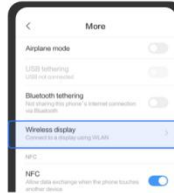
Airplay | Chromecast | **Miracast**

Android Device

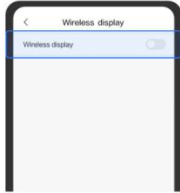
① Turn on Wi-Fi and enter Display.



② Enter Wireless display.



③ Turn on Wireless display.



③ Search for devices and connect.

