

L O F T

C100 - Wide Angle HD Conference Camera User Manual



Table of Contents

1. Installation Explanation	3
1.1 Product Interfaces	3
1.2 Usage of the Product.....	3
2. Product Introduction.....	4
2.1 Product Introduction.....	4
2.2 Product Features	5
2.3 Product Advantages	5
3. Technical Specifications.....	6
4. Maintenance and Troubleshooting	7
4.1 Camera Maintenance.....	7
4.2 Troubleshooting	7

The C100 user manual briefly introduces the camera functions, installation and operation. Please read carefully before application.

1,Application Instructions

To prevent damages to this camera or any products connected to it, this product can only be used within the specified range:

- 1) Do not expose the camera to rain or moisture;
- 2) To prevent the risk of electric shock, do not disassemble the camera;
- 3) Do not use the camera in environments outside of the specified temperature, humidity or power specifications;
- 4) When cleaning the camera lens, wipe with a soft and dry cloth. When excess dust is present, wipe gently with a mild detergent. To prevent a scratch on the lens, do not use a strong or corrosive detergent.

2,Electric Safety

This product must be installed in strict compliance with local electrical safety standards.

3,Installation

Avoid heavy pressure, severe vibration, and liquid damage to the product during installation.

4,Storage

Avoid heavy pressure, severe vibration, liquid damage to the product when storing.

5,Transport

Avoid heavy pressure, severe vibration, liquid damage to the product while transporting.

6,Material Safety

Please keep this product away from corrosive liquid, gas or solid material.

7,Unauthorized Disassembling

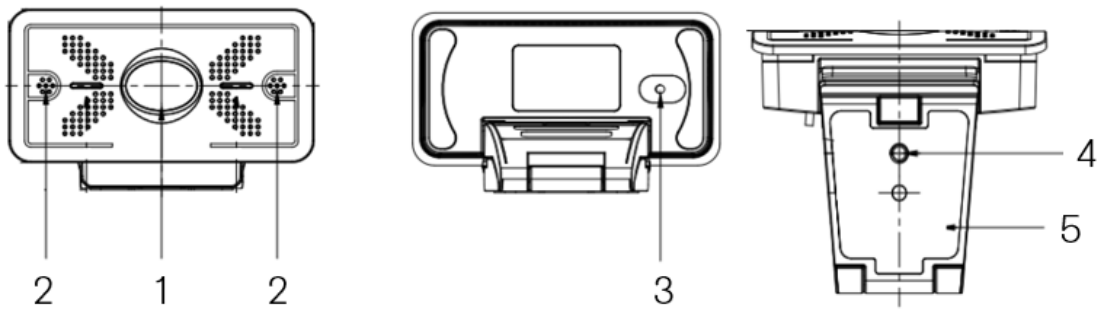
We are not responsible for any damage caused by unauthorized disassembling.

8,Magnetic Field Interference

This product is a Class A product. The electromagnetic field at a specific frequency may affect the camera image. Please note that this product may cause radio interference in a household environment.

1. Installation Explanation

1.1 Product Interfaces



Picture 1.1 Interfaces Explanation

- 1,Lens (fixed)
- 2,Audio In (built in pick-up)
- 3,USB2.0 cable outlet hole (no plug)
- 4,Screw hole for bracket
- 5,Fixation clamp

Please note that the USB 2.0 port available for plug and play can output video as well as power the camera.

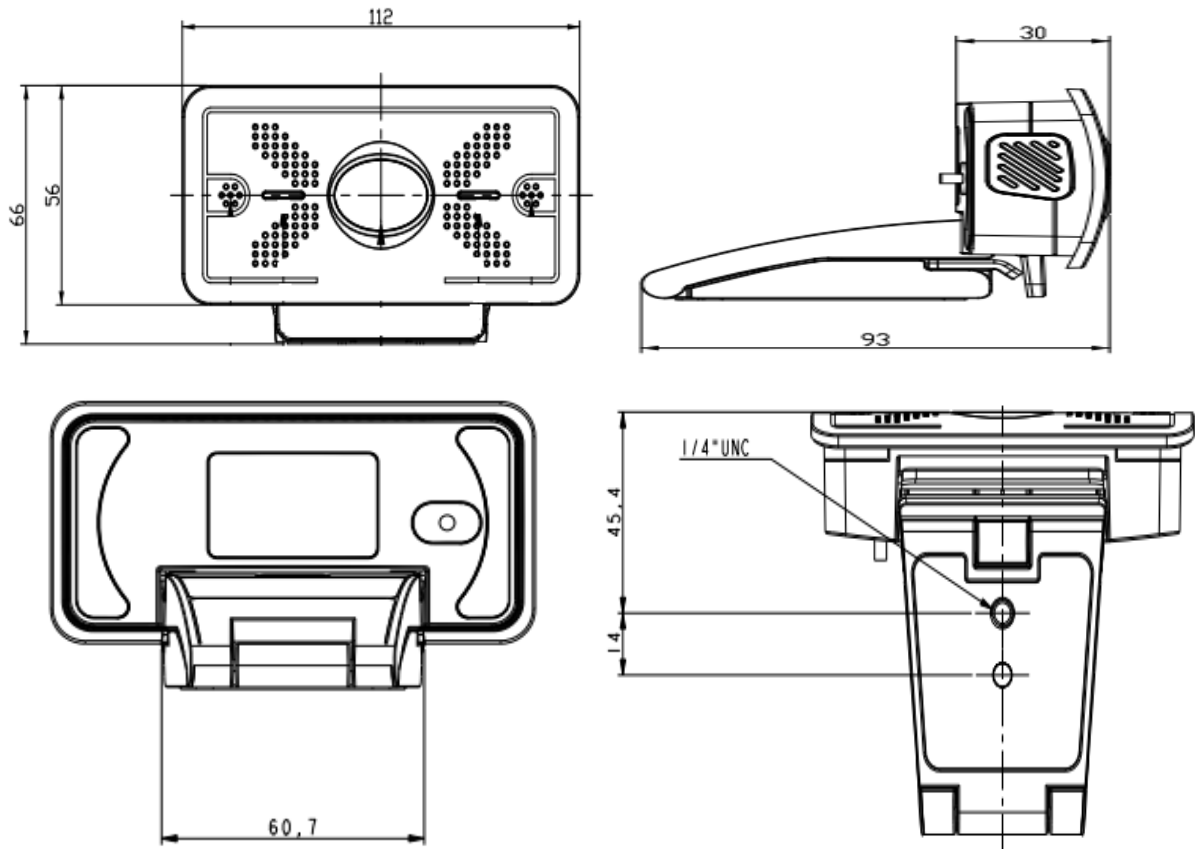
1.2 Usage of the Product

- 1) Product set up: Set up the device on an LCD screen, the top of a laptop, directly on desk or on a tripod.
- 2) The camera USB cable can connect with a computer, video conference terminal or another USB input device.
- 3) To open the video software, please select the video device to enable video output.

2. Product Introduction

2.1 Product Introduction

Product dimensions as picture below:



Accessory: Check and confirm all accessories are provided when opening the package:

User Manual x 1

Warranty Card x 1

2.2 C100 Product Features

The C100 series cameras offer perfect functionality, superior performance and rich interfaces. The features include advanced ISP processing algorithms to provide vivid images with a strong sense of depth, high resolution, and fantastic color rendition.

- ✓ **Low Noise and High SNR** - The Low Noise CMOS effectively ensures high SNR of the camera video
- ✓ **USB 2.0** - Perfect interface to plug and play
- ✓ **Multiple Video Compression** - H.264 video compression support, to ensure uninterrupted video performance
- ✓ **Audio Interfaces** - Support of AAC, MP3 and PCM audio encoding
- ✓ **Wide Application** - Personal video application, Video conference and video collaboration

2.3 C100 Product Advantages

- ✓ **Wide Angle Lens** - Enjoy an extended view of 78° degrees by the wide angle lens
- ✓ **Full HD** - Employs 1/2.8 inch, 2.07 million pixel high quality CMOS sensor. Resolution is up to 1920x1080 with a frame rate up to 30fps to showcase crystal-clear video image and vivid expressions and motions of a person.
- ✓ **Stereo sound** - Built in omni-directional high sensitive digital pickup with a distance reach to 5 meters, supporting auto gain, and auto noise reduction functions
- ✓ **Easy installation** - The camera comes with a fixing clamp, enabling the camera to be easily installed on an LCD screen, top of a laptop, or a tripod
- ✓ **User friendly** - No driving device or extra software downloads, making the user experience convenient and simple

3. Technical Specifications

Camera Parameters	
Sensor	1/2.9 inch high quality HD CMOS sensor
Effective Pixels	16: 9 2.07 megapixels
Video Format	950x540/160x90/320x180/432x240/640x360/800x448/800x600/864x480/ 960x720/1024x576/1280x720/1600x896/1600x896/1600x896/1600x896/1600 x896/1600x896/1920x1080/2304x1296/2304x1536/272x144/368x208/384x216/480x272/ 624x352/912x512/424x240/480x270/484x480/640x480/352x288/320x240/176x144/160 x120/P30
View Angle	83° (pan) 53.1° (tilt)
Minimum Illumination	0.5Lux(F1.8, AGC ON)
Focus	Auto
Aperture	Fixed
Backlight contrast	On/off
Exposure	Exposure parameter can be adjusted; supports auto exposure
Video Adjustment	Brightness,Color,Saturation,Contrast,White balance mode, Gain, Anti-flicker,Low Brightness Compensation etc
SNR	>50dB

Input/Output Interface	
Video Interfaces	USB2.0(power supply, upgrading available)
Video Compression Format	H.264,YUV, MJPEG
Audio Input Interface	Built in omnidirectional high sensitive digital pickup
Other Parameters	
Input Voltage	5V
Input Current	500mA (Max.)
Power consumption	2.5W
Store Temperature,Humidity	-10°C~+60°C、20%~95%
Working Temperature,Hu midity	-10°C~+50°C、20%~80%
Dimension (WXHXD)	112mm*65mm*93mm
Weight (appx.)	0.25kg
Application	Indoor
Accessory	User Manual,Warranty card

4. Maintenance and Troubleshooting

4.1 Camera Maintenance

- 1) Turn off the power adapter switch and the AC plug when the camera is not being used for an extended amount of time.
- 2) Use a soft cloth or tissue to clean the camera cover.
- 3) Use a soft cloth to clean the lens; Use a mild cleanser if needed. Do NOT use a strong or corrosive cleanser to clean the lens.

4.2 Troubleshooting

1) No video output

Solutions:

- a. Check if the camera USB Cable is well connected and if the USB Port is intact.
- b. Please disconnect the camera from the computer and re-connect with the USB Cable.
- c. Please check that the video software is set to the right device.

2) Video on and off

Solutions:

- a. Check if the camera USB Cable is well connected and if the USB Port is intact.
- b. Please disconnect the camera from the computer and re-connect with the USB Cable.

Copyright Notice:

All the contents of this manual and the copyright ownership belong to our company. Without the approval of the Company, no one can imitate, copy, reproduce or translate arbitrarily. This manual does not have any form of warranty, express or other imply. Specifications and information of this manual mentioned is for informational purposes, and the content will be updated at any time without notice.

Copyright can not be reproduced.