

LOFT™

PCMOD-G2-I5 - Modular PC, i5 Processor

PCMOD-G2-I7 - Modular PC, i7 Processor

User Manual



Table of Contents

1.0 Statement.....	3
2.0 Safety Instructions.....	3
3.0 Installation Procedure.....	4
4.0 Terminal Interface.....	6
5.0 Connection and Setting.....	7
6.0 Driver Installation.....	8

1.0 Statement

The image shown in this manual is indicative only. If there is inconsistency between the image and the actual product, the actual product shall govern.

2.0 Safety Instructions

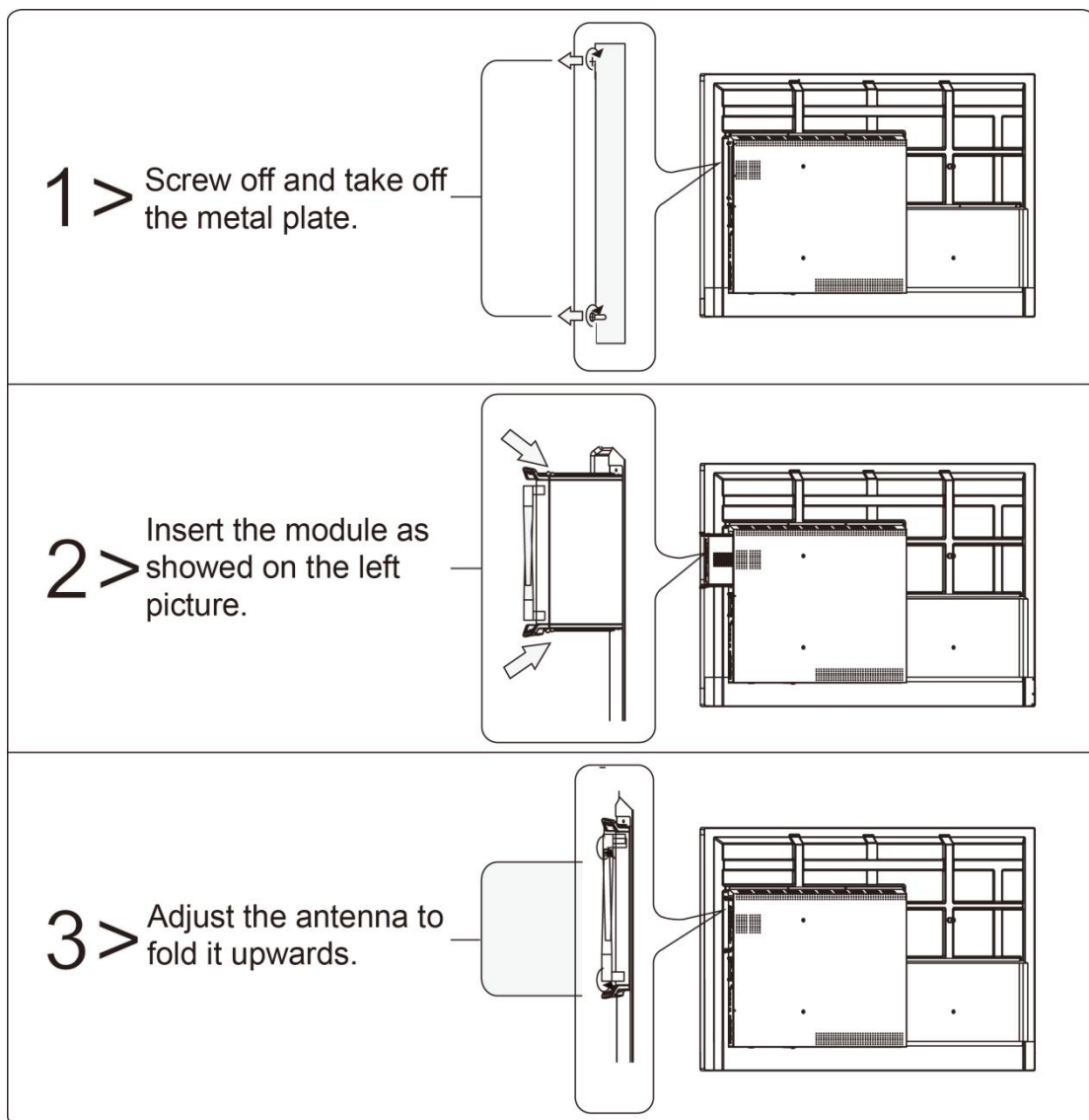
- 1) Please carefully read the User Manual before using the product.
- 2) Before moving the product, please unplug the AC power cord from power socket.
- 3) Before connecting or disconnecting any signal cables, make sure that all the power cords are unplugged in advance.
- 4) To avoid damages caused by frequent start up and shutdown, please wait for at least 30 seconds before restarting the product.
- 5) All the operations such as removal or installation shall be implemented on the electrostatic discharge (ESD) worktable, because some precision components are sensitive to electrostatic discharge.
- 6) If there is no ESD worktable, please take the following measures to minimize possible damages from electrostatic discharge, wear an anti-static wrist strap during operation, and always touch the metal chassis of frame of the corresponding products before removal or installation of any components.
- 7) The normal working temperature for the product is 0 ~ 40°C, and the normal working humidity is 10%~90%RH.
- 8) Assure good cooling and ventilation.
- 9) Dispose of or recycle the obsolete batteries properly. Keep children away from the batteries and do not throw the batteries into fire to avoid injuries.
- 10) There are heating hole on back cover, do not spray water to it or use damp cloth for cleaning.
- 11) Please call professional personnel for maintenance service.

3.0 Installation Procedure

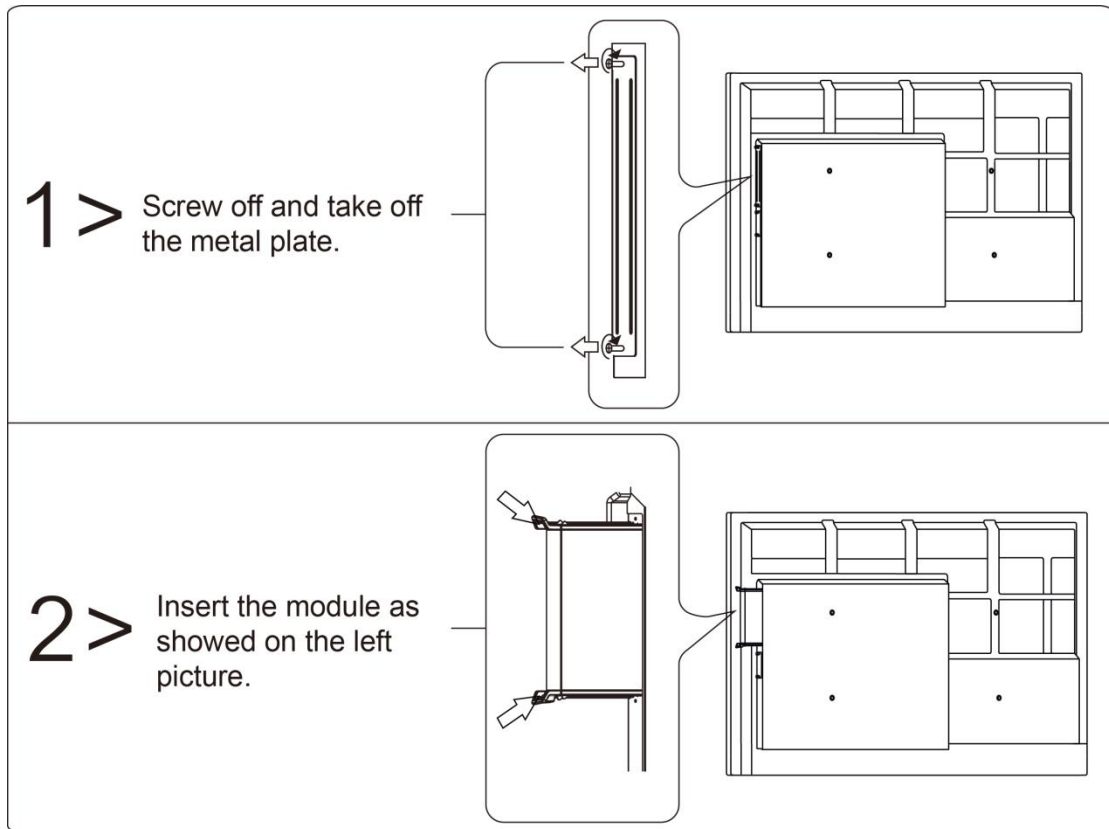
Because the product has two different configurations (with antenna or without antenna), please refer to the actual product. There are different installation methods with and without an antenna. See the diagram below for details:

3.1 Schematic diagram of installation with antenna

When installing the module with antenna, please fold the antenna as shown below to avoid damage to the antenna during installation.



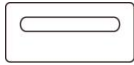






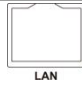




3.2 Installation diagram without antenna



Note: This product is required to be used with an interactive intelligent panel

4.0 Terminal Interface

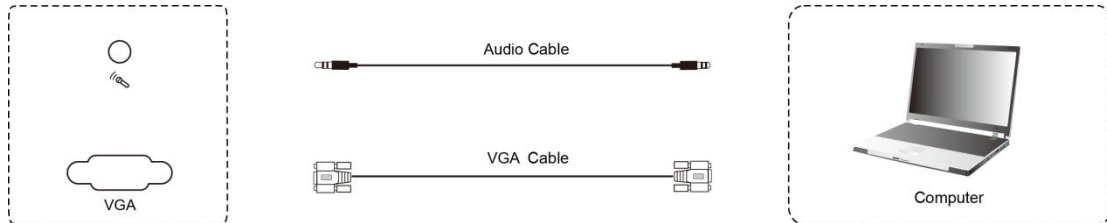
Due to the differences in the product of different models, the actual terminal type and quantity are subject to the actual product.

Number	Items	Function description
1		USB interface to connect USB devices,such as mobile hard disk,U disk,USB keyboard and mouse,USB drives,etc
2		Connect device with type-c interface (support USB only)
3		Connected to devices with Display Port output function
4	 HDMI	Connect to device with HDMI input function
5		Connect to device with microphone voice collection(used for recording function)
6		Connect to device with headphone input function
7	 VGA	Connected to display device with VGA input function
8	 LAN	Network interface
9		Wi-Fi antenna interface
10		Kensington Lock
11		Computer hard drive work indicator light
12		Computer power work indicator

5.0 Connection and Setting

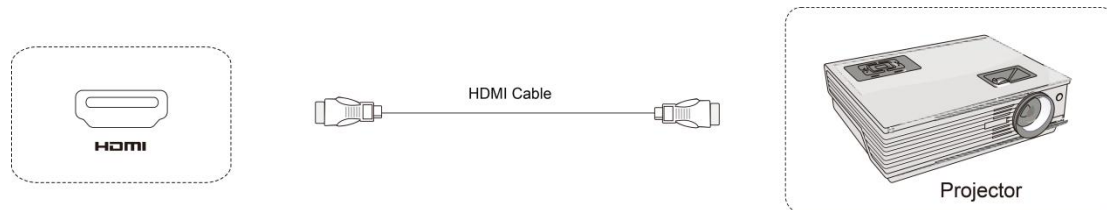
For the safety of you and the machine, please do not connect any power plug before connection.

5.1 External Computer and Touch Connection



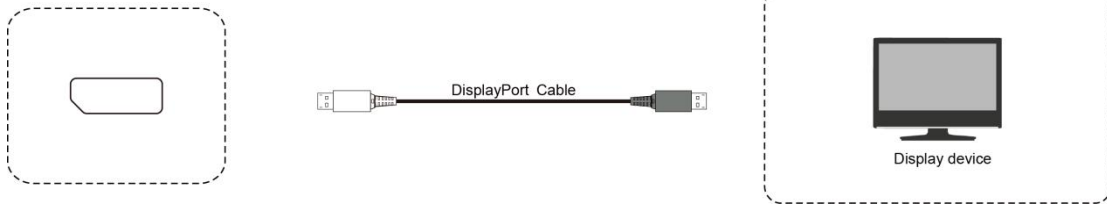
- 1) Use VGA cable to connect to VGA output port of external computer, and meanwhile use headphone audio cable to connect to external computer audio output interface.
- 2) After cable connection, plug in power cord, and switch power on.
- 3) Press the power key, and the equipment is power on.
- 4) Press the INPUT key to switch to VGA channel.

5.2 HDMI Out



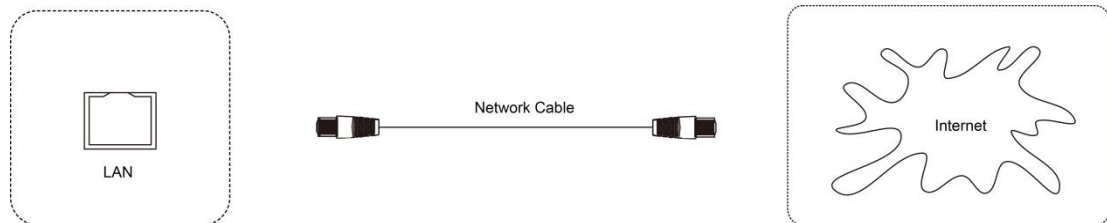
- 1) Use HDMI cable to connect audio and video equipment with HDMI input.
- 2) After cable connection, plug in power cord, and switch power on.
- 3) Press the power key to turn equipment on.

5.3 DP Out

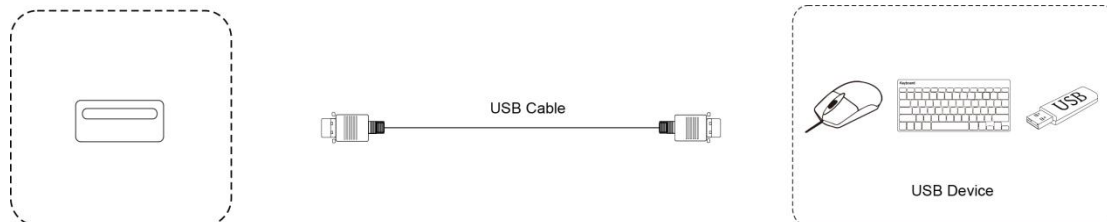


- 1) Connect display device with DisplayPort cable.
- 2) After cable connection, plug in power cord, and switch power on.
- 3) Press the power key, and the equipment is power on.
- 4) Press the INPUT key to switch to DP channel.

5.4 LAN Connection



5.5 USB



6.0 Driver Installation

Put the drive disk into the CD-ROM, the driver disk will automatically run the installation boot program, please select the driver you want to install, and then click start. If the driver disk does not automatically run the installation boot program, check X:\SETUP.EXE (assuming the drive disk is X).